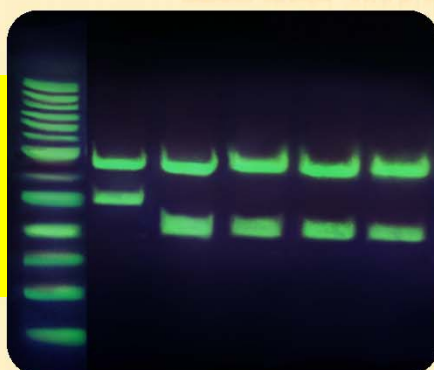




Loading Dye 型式
染劑預先與Sample
混合，直接跑膠



Safe-Green

GB-G108-G

激發光：藍光 (or UV)

放射光：綠色 (525nm)

偵測極限：0.2 - 0.6 ng



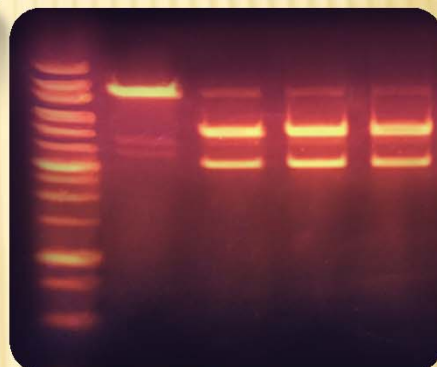
Safe-Red

GB-G108-R

激發光：UV

放射光：紅色 (630nm)

偵測極限：0.3 - 0.8
ng



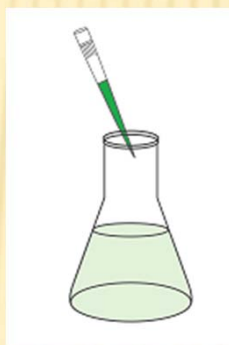
Gel Casting 型式
製膠時加入 NucleoSafe

GB-NS006

激發光：UV

放射光：綠色 (525nm)

紅色 (630nm)



傳統 Post Staining 型式
電泳後再染色，無須退染

SafeView PLUS

GB-G468

激發光：藍光 (or UV)

放射光：綠色 (525nm)

偵測極限：0.05 - 0.1 ng

